



This data sheet interacts with
PRT2 Catalogue
 34-36

No. 11 Mix & Match

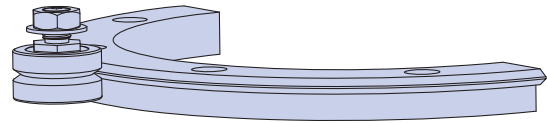
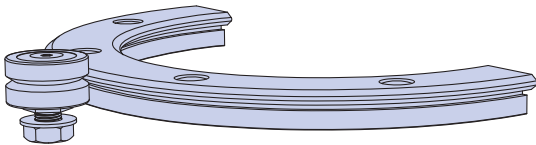
HepcoMotion® PRT2 products can be mixed and matched together to provide an optimised and flexible range. The tables below show which parts can or can not be used together. For further assistance or to discuss a particular application, please contact Hepco's Technical department.

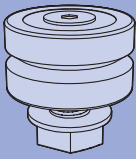
✓ Preferred Choice

✓ Compatible

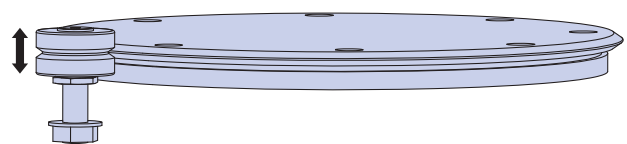
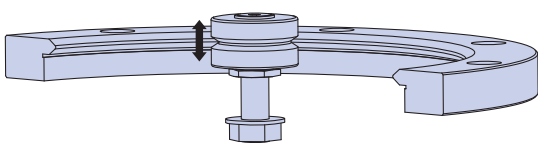
* Not Compatible

Bearings



	Double Edge Ring Slides													Single Edge External Vee					Single Edge Internal Vee					Ring Discs										
	(T)R1293	(T)R12127	(T)R20143	(T)R20210	(T)R25159	(T)R25255	(T)R25351	(T)R44468	(T)R44612	(T)R76799	(T)R761033	(T)R761267	(T)R761501	REV156	REV223	RES184	RES280	(T)RES376	REM505	(T)REM655	REL874	RIV161	RIV228	RIS182	(T)RIS278	RIS374	(T)RIM482	RIM627	RIL820	RD25159	RD25255	RD25351	RD44468	
Bearing	...J13...	✓	✓	✓	✓	✓	✓	✓	✓	✓	✓	✓	✓	✓	✓	✓	✓	✓	✓	✓	✓	✓	✓	✓	✓	✓	✓	✓	✓	✓	✓	✓	✓	✓
	...J18...	✓	✓	✓	✓	✓	✓	✓	✓	✓	✓	✓	✓	✓	✓	✓	✓	✓	✓	✓	✓	✓	✓	✓	✓	✓	✓	✓	✓	✓	✓	✓	✓	✓
	...J25...	*	*	✓	✓	✓	✓	✓	✓	✓	✓	✓	✓	✓	✓	✓	✓	✓	✓	✓	✓	✓	✓	✓	✓	✓	✓	✓	✓	✓	✓	✓	✓	✓
	...J34...	*	*	✓	✓	✓	✓	✓	✓	✓	✓	✓	✓	✓	✓	✓	✓	✓	✓	✓	✓	✓	✓	✓	✓	✓	✓	✓	✓	✓	✓	✓	✓	✓
	...J54...	*	*	*	*	*	*	✓	✓	✓	✓	✓	✓	✓	*	*	*	*	*	✓	✓	✓	*	*	*	*	✓	✓	✓	*	*	*	*	✓

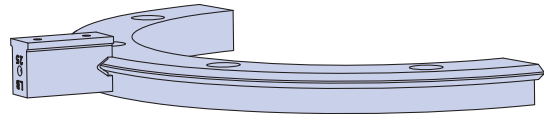
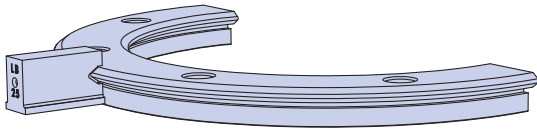
Floating Bearings

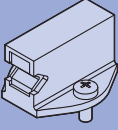


	Double Edge Ring Slides													Single Edge External Vee					Single Edge Internal Vee					Ring Discs										
	(T)R1293	(T)R12127	(T)R20143	(T)R20210	(T)R25159	(T)R25255	(T)R25351	(T)R44468	(T)R44612	(T)R76799	(T)R761033	(T)R761267	(T)R761501	REV156	REV223	RES184	RES280	(T)RES376	REM505	(T)REM655	REL874	RIV161	RIV228	RIS182	(T)RIS278	RIS374	(T)RIM482	RIM627	RIL820	RD25159	RD25255	RD25351	RD44468	
Floating Bearings	...FJ25...	*	*	✓	✓	✓	✓	✓	✓	✓	✓	✓	✓	✓	✓	✓	✓	✓	✓	✓	✓	✓	✓	✓	✓	✓	✓	✓	✓	✓	✓	✓	✓	
	...FJ34...	*	*	✓	✓	✓	✓	✓	✓	✓	✓	✓	✓	✓	✓	✓	✓	✓	✓	✓	✓	✓	✓	✓	✓	✓	✓	✓	✓	✓	✓	✓	✓	✓
	...FJ54...	*	*	*	*	*	*	✓	✓	✓	✓	✓	✓	*	*	*	*	*	✓	✓	✓	*	*	*	*	✓	✓	✓	*	*	*	*	✓	

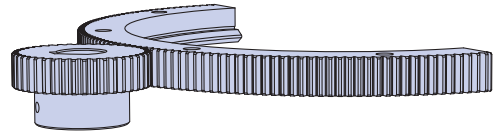
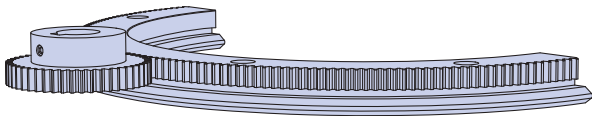
No. 11 Mix & Match

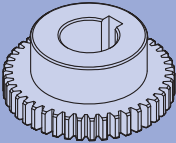
Lubricators



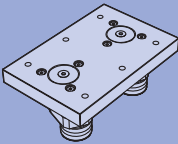
	Double Edge Ring Slides											Single Edge External Vee						Single Edge Internal Vee						Ring Discs								
	(T)R1293	(T)R12127	(T)R20143	(T)R20210	(T)R25159	(T)R25255	(T)R25351	(T)R44468	(T)R44612	(T)R76799	(T)R761033	(T)R761267	(T)R761501	REV156	REV223	RES184	RES280	(T)RES376	REM505	(T)REM655	REL874	RIV161	RIV228	RIS182	(T)RIS278	RIS374	(T)RIM482	RIM627	RIL820	RD25159	RD25255	RD25351
Lubricators	LB12	✓	✓	✓	✓	✓	✓	✗	✗	✗	✗	✗	✓	✓	✓	✓	✓	✗	✗	✗	✓	✓	✓	✓	✓	✗	✗	✗	✓	✓	✓	✗
	LB20	✗	✗	✓	✓	✓	✓	✓	✗	✗	✗	✗	✓	✓	✓	✓	✓	✓	✓	✗	✓	✓	✓	✓	✓	✗	✗	✗	✓	✓	✓	✓
	LB25	✗	✗	✗	✗	✓	✓	✓	✗	✗	✗	✗	✗	✗	✗	✓	✓	✓	✗	✗	✗	✗	✗	✓	✓	✓	✗	✗	✓	✓	✓	✗
	LB44	✗	✗	✗	✗	✗	✗	✓	✓	✗	✗	✗	✗	✗	✗	✗	✗	✗	✓	✓	✗	✗	✗	✗	✗	✓	✓	✗	✗	✗	✗	✓
	LB76	✗	✗	✗	✗	✗	✗	✗	✗	✓	✓	✓	✓	✗	✗	✗	✗	✗	✗	✗	✓	✗	✗	✗	✗	✗	✗	✓	✗	✗	✗	✗

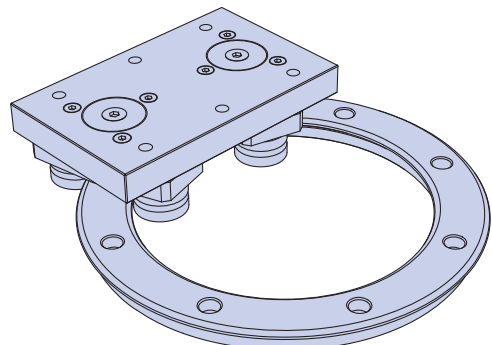
Pinions



	Double Edge Ring Slides											Single Edge External Vee						Single Edge Internal Vee						Ring Discs									
	(T)R1293	(T)R12127	(T)R20143	(T)R20210	(T)R25159	(T)R25255	(T)R25351	(T)R44468	(T)R44612	(T)R76799	(T)R761033	(T)R761267	(T)R761501	REV156	REV223	RES184	RES280	(T)RES376	REM505	(T)REM655	REL874	RIV161	RIV228	RIS182	(T)RIS278	RIS374	(T)RIM482	RIM627	RIL820	RD25159	RD25255	RD25351	RD44468
Pinions	SSP04W3.5T42	✓	✓	✗	✗	✗	✗	✗	✗	✗	✗	✗	✗	✗	✗	✗	✗	✗	✗	✗	✗	✗	✗	✗	✗	✗	✗	✗	✗	✗	✗	✗	
	SSP07W9T28	✗	✗	✗	✗	✗	✗	✗	✗	✗	✗	✗	✗	✓	✓	✗	✗	✗	✗	✗	✗	✓	✓	✗	✗	✗	✗	✗	✗	✗	✗	✗	✗
	SSP08W4T48	✗	✗	✓	✓	✓	✓	✗	✗	✗	✗	✗	✗	✗	✗	✗	✗	✗	✗	✗	✗	✗	✗	✗	✗	✗	✗	✗	✗	✓	✓	✓	✗
	SSP08W6T48	✗	✗	✓	✓	✓	✓	✗	✗	✗	✗	✗	✗	✗	✗	✗	✗	✗	✗	✗	✗	✗	✗	✗	✗	✗	✗	✗	✗	✓	✓	✓	✗
	P10W11T42	✗	✗	✗	✗	✗	✗	✓	✓	✗	✗	✗	✗	✗	✗	✓	✓	✓	✗	✗	✗	✗	✗	✓	✓	✓	✗	✗	✗	✗	✗	✗	✗
	P10W7T48	✗	✗	✗	✗	✗	✗	✓	✓	✗	✗	✗	✗	✗	✗	✓	✓	✓	✗	✗	✗	✗	✗	✓	✓	✓	✗	✗	✗	✗	✗	✗	✓
	P125W14T34	✗	✗	✗	✗	✗	✗	✗	✗	✗	✗	✗	✗	✗	✗	✗	✗	✗	✓	✓	✗	✗	✗	✗	✗	✓	✓	✗	✗	✗	✗	✗	✗
	P15W12T48	✗	✗	✗	✗	✗	✗	✗	✗	✓	✓	✓	✓	✗	✗	✗	✗	✗	✗	✗	✗	✗	✗	✗	✗	✗	✗	✗	✗	✗	✗	✗	✗
	P20W20T27	✗	✗	✗	✗	✗	✗	✗	✗	✗	✗	✗	✗	✗	✗	✗	✗	✗	✗	✗	✓	✗	✗	✗	✗	✗	✗	✓	✗	✗	✗	✗	✗

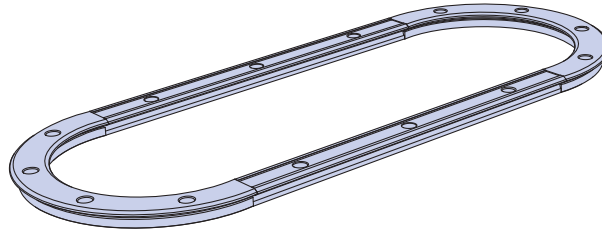
Bogie Carriages

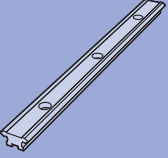
	Double Edge Ring Slides												
	(T)R1293	(T)R12127	(T)R20143	(T)R20210	(T)R25159	(T)R25255	(T)R25351	(T)R44468	(T)R44612	(T)R76799	(T)R761033	(T)R761267	(T)R761501
Bogie Carriages	BCP25	✗	✗	✗	✓	✓	✓	✗	✗	✗	✗	✗	✗
	BCP44	✗	✗	✗	✗	✗	✓	✓	✗	✗	✗	✗	✗
	BCP76	✗	✗	✗	✗	✗	✗	✗	✓	✓	✓	✓	✓



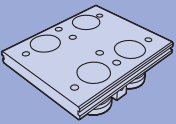
No. 11 Mix & Match

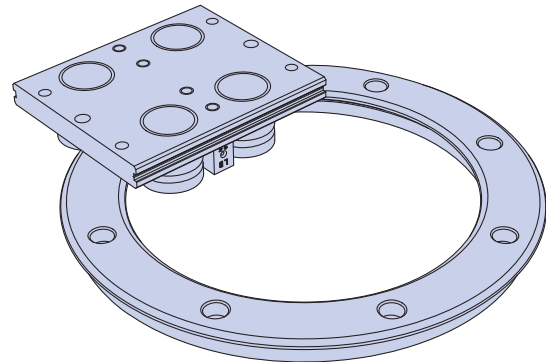
Track System Slides



		Double Edge Ring Slides											Single Edge External Vee					Single Edge Internal Vee					Ring Discs													
		(T)R1293	(T)R12127	(T)R20143	(T)R20210	(T)R25159	(T)R25255	(T)R25351	(T)R44468	(T)R44612	(T)R76799	(T)R761033	(T)R761267	(T)R761501	REV156	REV223	RES184	RES280	(T)RES376	REM505	(T)REM655	REL874	RIV161	RIV228	RIS182	(T)RIS278	RIS374	(T)RIM482	RIM627	RIL820	RD25159	RD25255	RD25351	RD44468		
Track System Slides	TNMS12	✓	✓	x	x	x	x	x	x	x	x	x	x	x	x	x	x	x	x	x	x	x	x	x	x	x	x	x	x	x	x	x	x	x	x	
	TNV20	x	x	✓	✓	x	x	x	x	x	x	x	x	x	x	x	x	x	x	x	x	x	x	x	x	x	x	x	x	x	x	x	x	x	x	
	TNS25	x	x	x	x	✓	✓	✓	x	x	x	x	x	x	x	x	x	x	x	x	x	x	x	x	x	x	x	x	x	x	x	x	x	x	x	
	TNM44	x	x	x	x	x	x	x	✓	✓	x	x	x	x	x	x	x	x	x	x	x	x	x	x	x	x	x	x	x	x	x	x	x	x	x	
	TNL76	x	x	x	x	x	x	x	x	x	✓	✓	✓	✓	x	x	x	x	x	x	x	x	x	x	x	x	x	x	x	x	x	x	x	x	x	x
	TNSE	x	x	x	x	x	x	x	x	x	x	x	x	x	x	x	x	✓	x	x	x	x	x	x	x	✓	x	x	x	x	x	x	x	x	x	x
	TNME	x	x	x	x	x	x	x	x	x	x	x	x	x	x	x	x	x	x	✓	x	x	x	x	x	x	✓	x	x	x	x	x	x	x	x	x

Fixed Centre Carriages

		Double Edge Ring Slides												
		(T)R1293	(T)R12127	(T)R20143	(T)R20210	(T)R25159	(T)R25255	(T)R25351	(T)R44468	(T)R44612	(T)R76799	(T)R761033	(T)R761267	(T)R761501
Fixed Centre Carriages*	FCC1293	✓	x	x	x	x	x	x	x	x	x	x	x	x
	FCC12127	x	✓	x	x	x	x	x	x	x	x	x	x	x
	FCC20143	x	x	✓	x	x	x	x	x	x	x	x	x	x
	FCC20210	x	x	x	✓	x	x	x	x	x	x	x	x	x
	FCC25159	x	x	x	x	✓	x	x	x	x	x	x	x	x
	FCC25255	x	x	x	x	x	✓	x	x	x	x	x	x	x
	FCC25351	x	x	x	x	x	x	✓	x	x	x	x	x	x
	FCC44468	x	x	x	x	x	x	x	✓	x	x	x	x	x
	FCC44612	x	x	x	x	x	x	x	x	✓	x	x	x	x
	FCC76799	x	x	x	x	x	x	x	x	x	✓	x	x	x
	FCC761033	x	x	x	x	x	x	x	x	x	x	✓	x	x
	FCC761267	x	x	x	x	x	x	x	x	x	x	x	✓	x
FCC761501	x	x	x	x	x	x	x	x	x	x	x	x	✓	



*Fixed centre carriages can only be used with Double edge ring slides and segments. For more details on the use of carriage plates with single edge ring slides and segments, please refer to Datasheet No. 4 Single edge track systems.

HepcoMotion®, Lower Moor Business Park,
Tiverton Way, Tiverton, Devon, England EX16 6TG

Tel: +44 (0) 1884 257000

Fax: +44 (0) 1884 243500

E-mail: sales@hepcotion.com

