

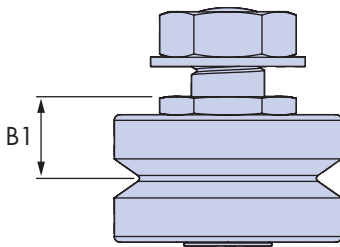


Controlled Height Bearings - CHK

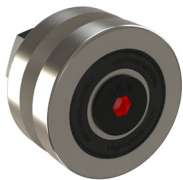
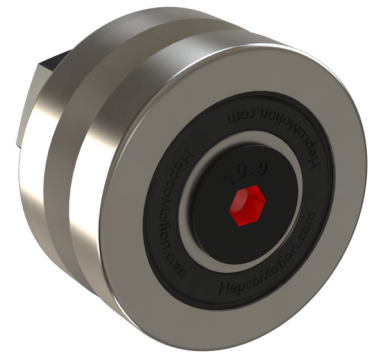
HepcoMotion® Controlled Height Bearings (CHK) are available for GV3, PRT2 and SL2 product ranges. CHK bearings are designed to minimise the variation in the B1 dimension, this is desirable in high precision application and is recommended whenever Double Row Bearing are used. Selected in $\pm 0.010\text{mm}$ bands in respect of the B1 dimension, they are supplied in sets of up to 50 parts as standard, with large sets on request.

CHK bearings should be used in a set, where only bearings of the same tolerance band are used in any one carriage or in the case of PRT2, any single ring application. In applications with multiple carriages it recommended that bearings with adjacent tolerance bands are used in carriages that will be assembled next to each other.

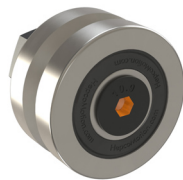
To aid identification, bearings are supplied with a colour coded mark located in the hexagon recess on the underside of the bearing, as shown below.



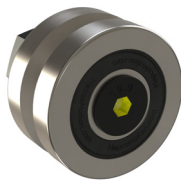
Identification Colour	B1 Tolerance Band
Red	-0.05
	-0.03
Orange	-0.03
	-0.01
Yellow	-0.01
	+0.01
Green	+0.01
	+0.03
Blue	+0.03
	+0.05



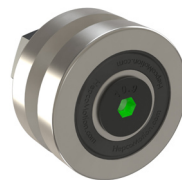
Red



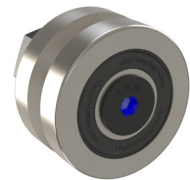
Orange



Yellow



Green



Blue

HepcoMotion®, Lower Moor Business Park,
Tiverton Way, Tiverton, Devon, England EX16 6TG

Tel: +44 (0) 1884 257000

Fax: +44 (0) 1884 243500

E-mail: sales@hepcotion.com



INVESTOR IN PEOPLE

